

MACRON

MACRON FLAT

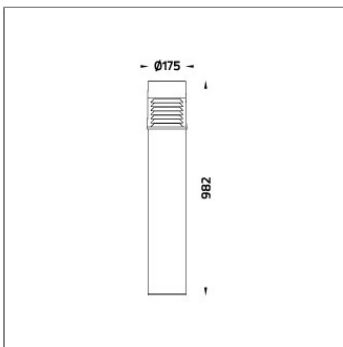
BOLLARD



LAST UPDATE: 18-06-2024



MACRON is a family of shielded bollard with symmetrical light distribution. It is equipped with the latest generation of COB LED with good color consistency. HID light source and E27 holder for Led retrofit lamps are also available. The clear polycarbonate cover with internal glare suppression louvers improves lighting quality by limiting the upward light emission. It is universally installed in walkways, parks, commercial areas and open spaces. It provides general lighting for the residential areas where light pollution has to be controlled. The bollard height can be customized according to specific requirement. An anchorage unit is available as an accessory.



Technical Data



| | |
|-----------------------|--------------------|
| Ordering Code : | 7107-O-3-873-XX |
| Lamp : | LED |
| CCT : | 3000 K |
| CRI : | CRI >80 |
| SDCM : | SDCM = 3 |
| Lamp Lumen : | 1800 lm |
| Luminaire Lumen : | 400 lm |
| Lamp Wattage : | 20 W |
| Luminaire Wattage : | 20 W |
| Efficacy : | 20 lm/W |
| Ambient Temperature : | 50°C |
| Lumen Maintenance | L70B50 >40,000 h |
| Controller : | On-Off [AC LED] |
| Input Voltage : | 220-240Vac 50/60Hz |
| Net Weight : | 6.30 kg. |

Ordering code guide

XXXX-X-X-XXX-XX
A B C D E

A Product Code
B Reflector
C Electrical Component
D Lamp
E Color



Icon definition

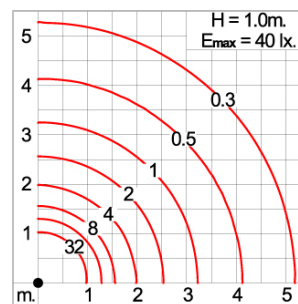
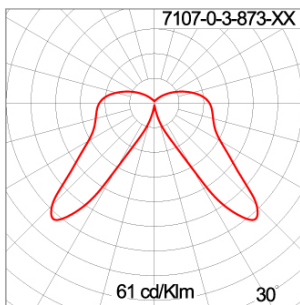
*Due to the constancy of product development, we reserve the right to alter all specification without prior notice.

Unilamp Co., Ltd.
461 Ramintra Road, Kannayao, Bangkok 10230 Thailand
Tel : +66[0]2 943 2420-1, +66[0]2 946 4170-1
Fax : +66[0]2 943 2419
online@unilamp.co.th
www.unilamp.co.th

Specification

| | |
|-------------------------|-----------------------------------------------------------------------------------------------------------------------------------------------------------------------------------------------------------------------------------|
| IEC Standard | IEC 60598-1 General Requirement IEC 60598-2-1 Fixed Luminaires |
| Protection | IP65 Class I |
| IK Rating | Protection against mechanical impact IK09 on body and IK10 optical part. |
| Luminaires Body Housing | High-pressure die cast aluminum alloy body and components. Extruded aluminum S6063 alloy body with low copper content. |
| Coating Process | Nano Ceramic surface conversion, resistant to corrosive environment. Luminaire primarily coated with epoxy resin and top coated with UV stabilized polyester powder and cured in digital temperature controlled chamber at 200°C. |
| Diffuser | Self-extinguishing high impact resistant clear polycarbonate diffuser with UV stabilized additive. |
| Reflector | Glare shield slanted aluminum louvers. |
| Gasket | Weather resistant silicone gasket. Working temperature -40°C to +200°C. |
| External Screws | External screws are in stainless steel with protection grease. |
| Cable Entry | Cable entry protected by weather proof grommet. To be used with HO5RN-F/ HO7RN-F cable with 6-13mm. diameter. |
| Led | High quality AC LED module. Conform to safety standard and electromagnetic compatibility standard. |
| Internal Wire | Tinned copper conductor with silicone insulated internal wire. IMQ approved. Working temperature -40°C to +180°C. |
| Terminal Block | Terminal block in GFR PA6.6 for cable with cross section up to 2.5 sqmm. VDE approved. Class1 luminaire provided with the earth connection. |
| Pre-Wire Cable | Pre-wired with 3x0.75 sqmm. HO5RN-F neoprene cable. IMQ approved. Equipped with anti-humidity kit. |
| Caution | Installation work has to be carried on according to the enclosed installation manual. |
| Color | <div> <div>Black O1</div> <div>Graphite O2</div> <div>Dark Grey O3</div> <div>Aluminum Silver O4</div> <div>White O6</div> <div>Wooden Brown O7</div> </div> |

Light Distribution



MACRON

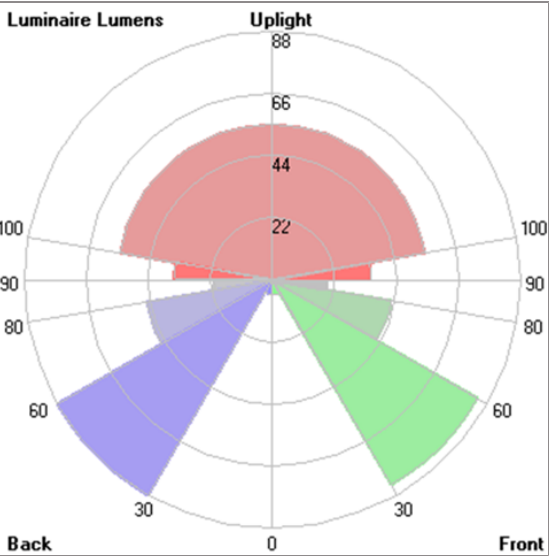
MACRON FLAT

BOLLARD



LAST UPDATE: 18-06-2024

Bug Report



| Lum. Classification System (LCS) | | | | |
|----------------------------------|-----------|----------|-------|-------|
| LCS | Zone | %Lumens | %Lamp | %Lum |
| FL | [0-30] | 5.4 | 0.3 | 1.4 |
| FM | [30-60] | 83.8 | 4.7 | 21.0 |
| FH | [60-80] | 42.6 | 2.4 | 10.7 |
| FVH | [80-90] | 19.6 | 1.1 | 4.9 |
| BL | [0-30] | 5.1 | 0.3 | 1.3 |
| BM | [30-60] | 87.8 | 4.9 | 22.0 |
| BH | [60-80] | 45.2 | 2.5 | 11.3 |
| BVH | [80-90] | 20.7 | 1.2 | 5.2 |
| UL | [90-100] | 34.7 | 1.9 | 8.7 |
| UH | [100-180] | 54.8 | 3.0 | 13.7 |
| Total | | 399.7 | 22.3 | 100.0 |
| BUG Rating | | B0-U3-G1 | | |

*Due to the constancy of product development,
we reserve the right to alter all specification
without prior notice.

MACRON

MACRON FLAT

BOLLARD



LAST UPDATE: 18-06-2024

Accessories



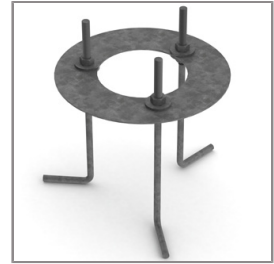
Ordering Code:
AUN-CON-0009-00
IP68 connection device,
cable diameter 5-9.5mm,
On-Off



Ordering Code:
AUN-CON-0010-00
IP68 connection device 3
pole, cable diameter
5-9.5mm, with distribution
block



Ordering Code:
AUN-CON-0013-00
IP68 connection device,
cable diameter 7-11.5mm,
On-Off



Ordering Code:
AUN-ACB-0001-00
Anchor bolt kit, bollard